

# Protecting Data with Encryption

Dr. Kurt Rohloff  
Co-Founder and Chief Technology Officer, Duality Technologies

This research was developed with funding from the Defense Advanced Research Projects Agency (DARPA).

The views, opinions and/or findings expressed are those of the author and should not be interpreted as representing the official views or policies of the Department of Defense or the U.S. Government.

# The data collaboration challenge



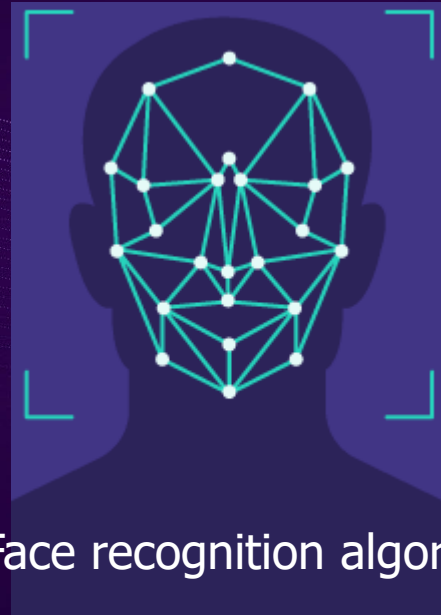
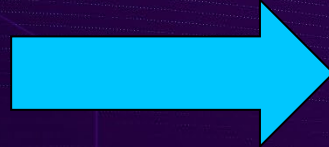
It is difficult for organizations to **share and collaborate on sensitive data** needed to make critical decisions

Fully Homomorphic Encryption (FHE) enables data to be computed on while it is protected by encryption.



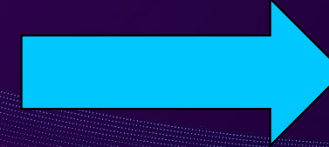
1. Take photo

2. Protect using encryption

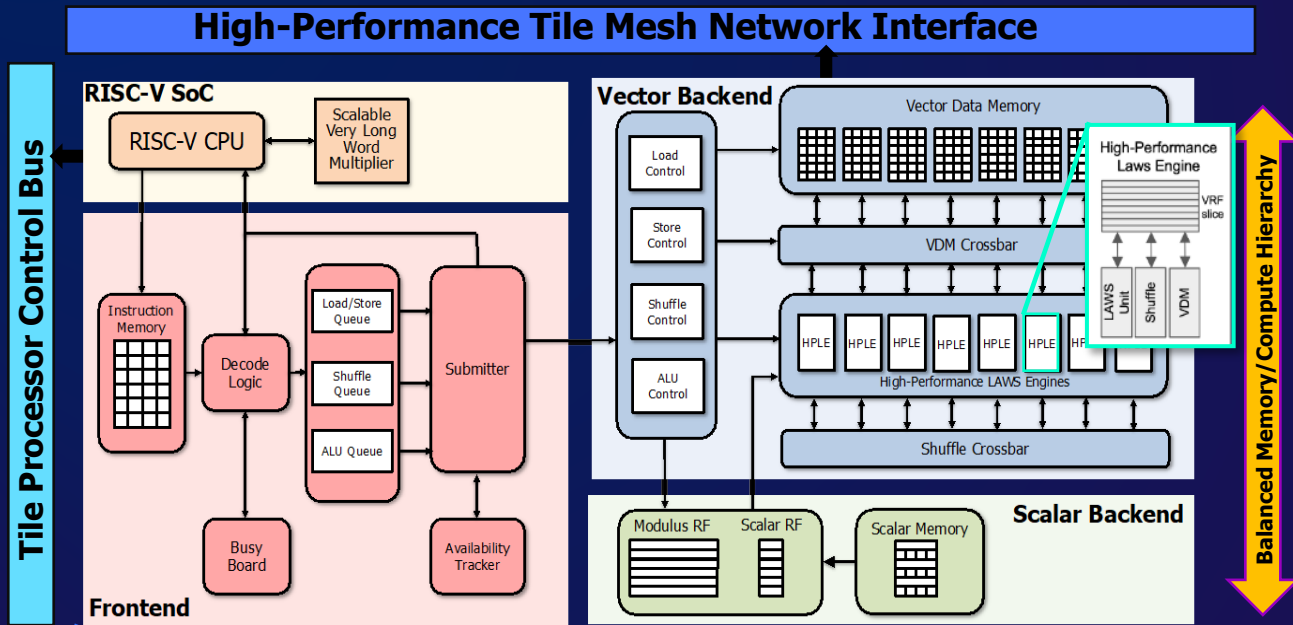


3. Face recognition algorithm

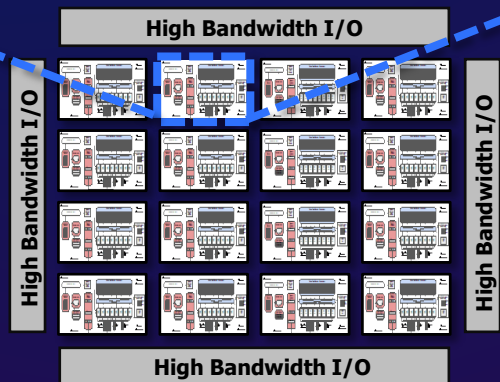
4. Reveal using decryption



5. It's Kurt



Trebuchet Ring Processor Unit (RPU/Tile)



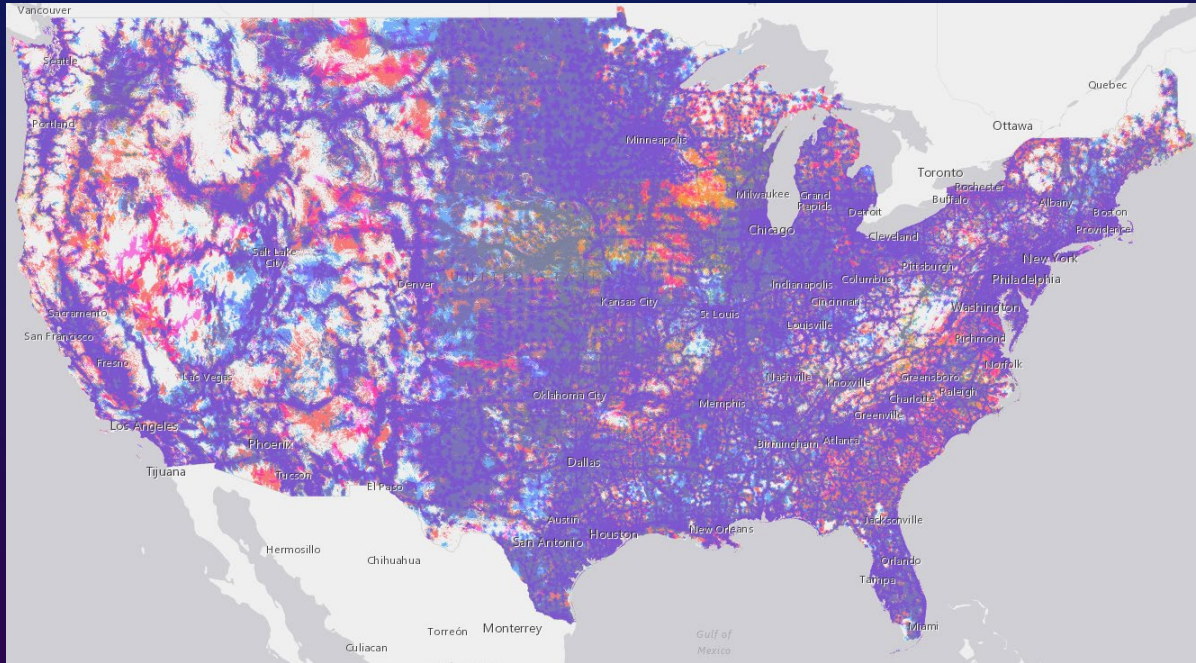
Trebuchet Chip Architecture

# TREBUCHET Processor Architecture brings FHE to life

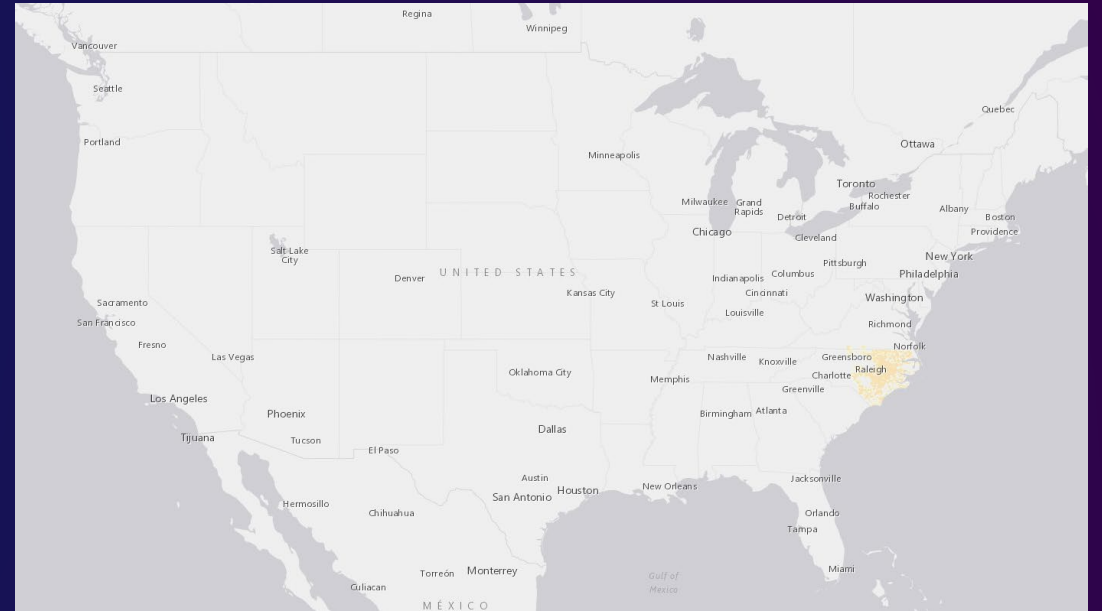
TREBUCHET balances

- *Compute*
- *Communication*
- *Memory*

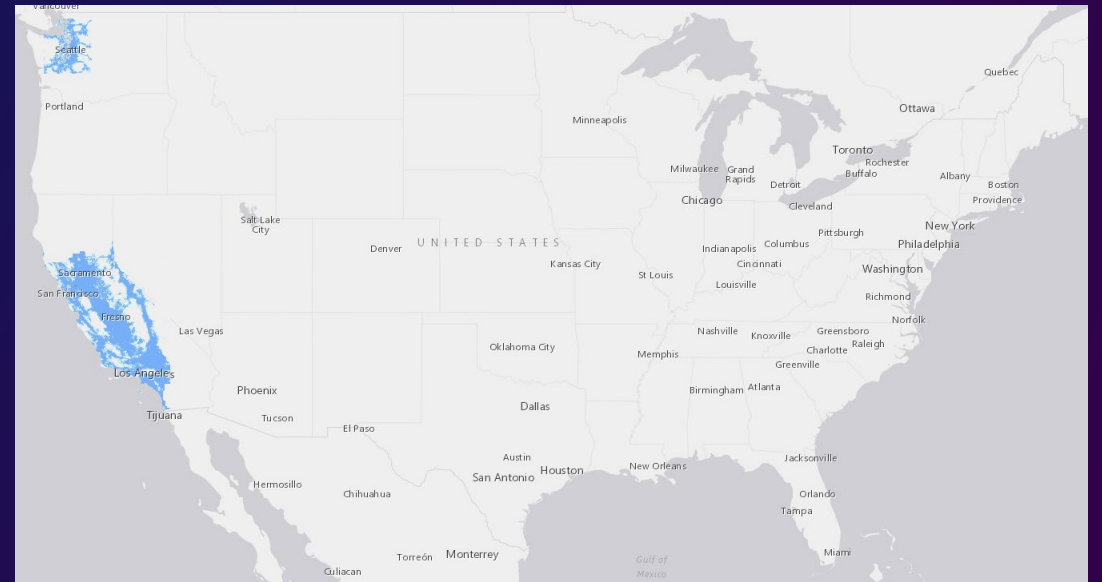
# Create Your Network on Other's Infrastructure



US Cellular Network Coverage



Example 1: The Raleigh Network



Example 2: The Sea-San-LA network

**THANK YOU**

